



ELSEVIER

Contents lists available at ScienceDirect

Digestive and Liver Disease

journal homepage: www.elsevier.com/locate/dld



Position Paper

Diagnostic and therapeutic approach to children with chronic refractory constipation: Consensus report by the SIGENP motility working group[☆]



Paolo Quitadamo^{a,1,*}, Renato Tambucci^{b,1,*}, Valentina Mancini^c, Angelo Campanozzi^d, Tamara Caldaro^b, Valentina Giorgio^e, Licia Pensabene^f, Sara Isoldi^{a,g}, Saverio Mallardo^g, Fabio Fusaro^h, Annamaria Staianoⁱ, Silvia Salvatore^j, Osvaldo Borrelli^k

^a Pediatric Gastroenterology and Epatology Unit, Santobono-Pausilipon Children's Hospital, Naples, Italy

^b Digestive Endoscopy and Surgery Unit, Bambino Gesù Children's Hospital, IRCCS, Rome, Italy

^c Department of Pediatrics and Neonatology, San Carlo Hospital, Milan, Italy

^d Pediatrics, Department of Medical and Surgical Sciences, University of Foggia

^e UOC Pediatria, Fondazione Policlinico Universitario A. Gemelli IRCCS, Roma, Italy

^f Department of Medical and Surgical Sciences, Pediatric Unit, University "Magna Graecia" of Catanzaro, Catanzaro, Italy

^g Maternal and Child Health Department, Sapienza - University of Rome, Santa Maria Goretti Hospital, Polo Pontino, Latina, Italy

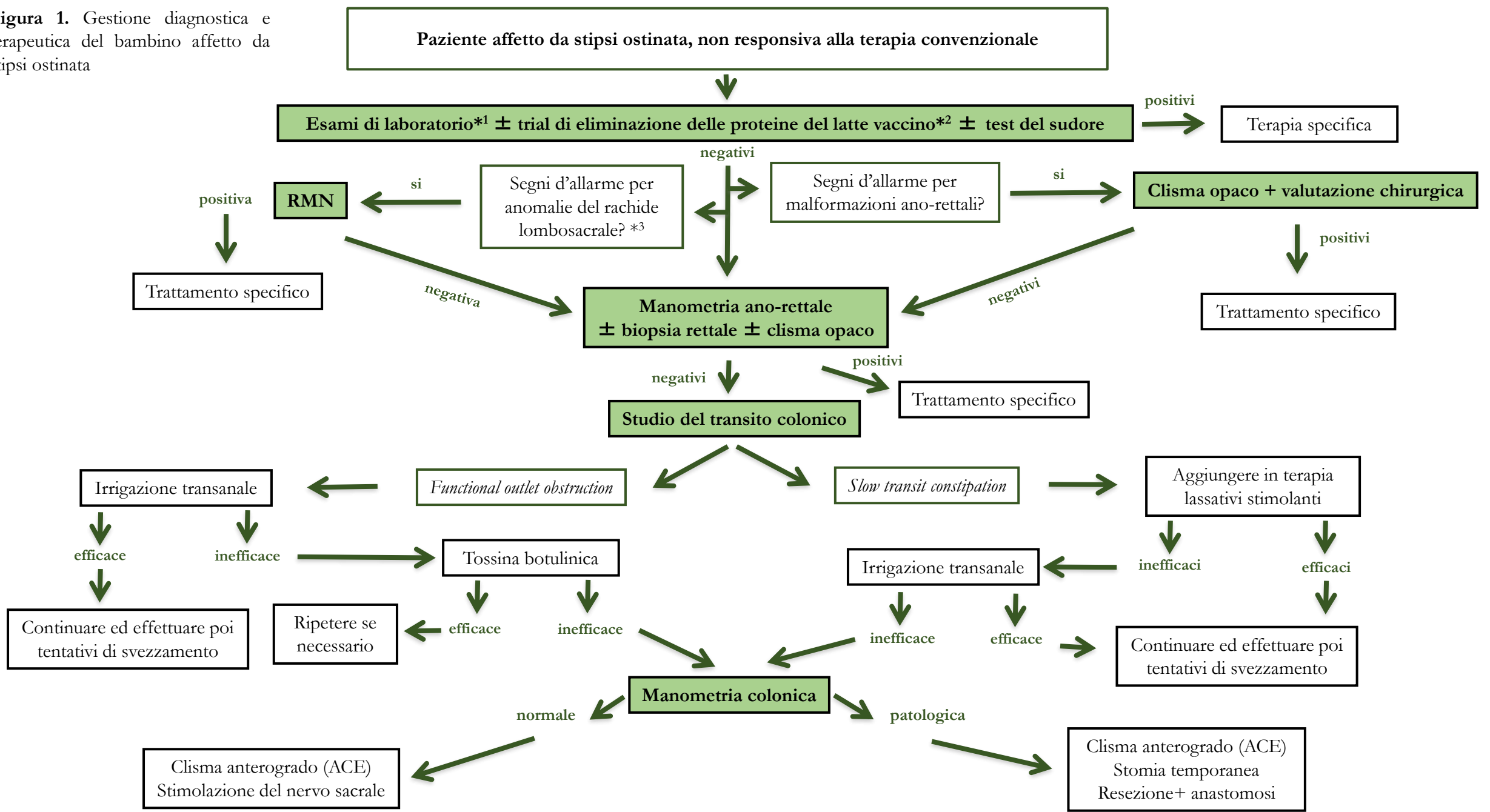
^h Department of Medical and Surgical Neonatology, Newborn Surgery Unit, Digestive and Endoscopic Surgery, Gastroenterology and Nutrition, Intestinal Failure Rehabilitation Research Group, Bambino Gesù Children's Hospital Research Institute, Rome, Italy

ⁱ Department of Translational Medical Science, Section of Pediatrics, University "Federico II", Naples, Italy

^j Pediatric Department, Ospedale "F. Del Ponte", University of Insubria, Varese, Italy

^k Division of Neurogastroenterology and Motility, Department of Paediatric Gastroenterology, UCL Institute of Child Health and Great Ormond Street Hospital, London, UK

Figura 1. Gestione diagnostica e terapeutica del bambino affetto da stipsi ostinata



*1 incluso emocromo, sierologia per celiachia, profilo tiroideo, elettroliti ed indici di funzionalità d'organo e di flogosi

*2 in bambini con storia personale o familiare suggestiva per diatesi allergica

*3 fossetta o ciuffo di peli sacrali, deviazione della schisi glutea, natiche piatte, riflessi spinali ridotti o assenti (anal wink, riflesso cremasterico e riflessi tendinei profondi degli arti inferiori)